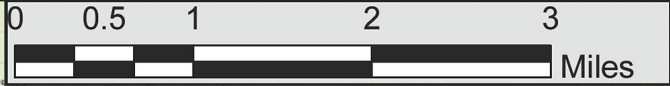




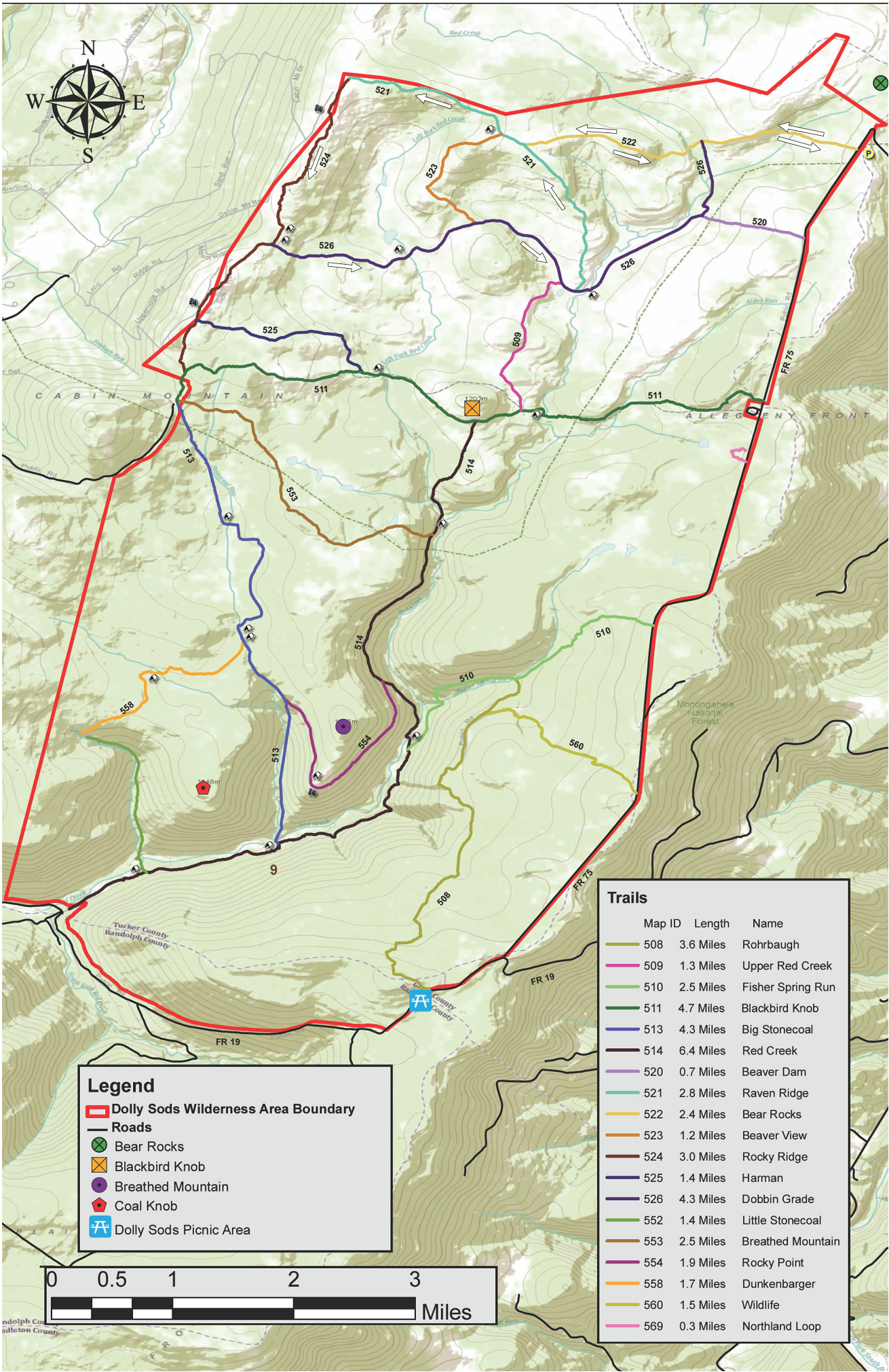
**Legend**

- Dolly Sods Wilderness Area Boundary
- Roads
- Bear Rocks
- Blackbird Knob
- Breathed Mountain
- Coal Knob
- Dolly Sods Picnic Area



**Trails**

| Map ID | Length    | Name              |
|--------|-----------|-------------------|
| 508    | 3.6 Miles | Rohrbaugh         |
| 509    | 1.3 Miles | Upper Red Creek   |
| 510    | 2.5 Miles | Fisher Spring Run |
| 511    | 4.7 Miles | Blackbird Knob    |
| 513    | 4.3 Miles | Big Stonecoal     |
| 514    | 6.4 Miles | Red Creek         |
| 520    | 0.7 Miles | Beaver Dam        |
| 521    | 2.8 Miles | Raven Ridge       |
| 522    | 2.4 Miles | Bear Rocks        |
| 523    | 1.2 Miles | Beaver View       |
| 524    | 3.0 Miles | Rocky Ridge       |
| 525    | 1.4 Miles | Harman            |
| 526    | 4.3 Miles | Dobbin Grade      |
| 552    | 1.4 Miles | Little Stonecoal  |
| 553    | 2.5 Miles | Breathed Mountain |
| 554    | 1.9 Miles | Rocky Point       |
| 558    | 1.7 Miles | Dunkenbarger      |
| 560    | 1.5 Miles | Wildlife          |
| 569    | 0.3 Miles | Northland Loop    |



## Dolly Sods North - Seneca Rocks, West Virginia

| Length   | Difficulty | Streams | Views | Solitude | Camping |
|--|------------|---------|-------|----------|---------|
| 11.9 mls   | ★          | ★       | ★     | ★        | ★       |
| <b>Hiking Time:</b> 6.0 hours plus a half hour for lunch<br><b>Elev. Gain:</b> 1,050 ft<br><b>Parking:</b> There is a large parking area on FR75 just before the descent, park 200 yards to the south on FR75 opposite the trail head. 39.06352, -79.30326 |            |         |       |          |         |

Arguably one of the most unique, and beautiful hiking areas on the East Coast. The high plateaus of Dolly Sods are made up of wind carved sand stone, stunted red spruce, grassy meadows, and sphagnum bogs. The characteristic meadows are the result of logging that took place from 1899 to 1924. During the Second World War the U.S. Army used the area for artillery and mortar training, and at the trailheads the Army Corp of Engineers still displays signs warning hikers that there may be unexploded ordinance in the area.

The name Dolly Sods derives from a combination of Dahles, a local 18th century family, and Sods, meaning an open mountain top or meadow. After WWII the area fell into neglect, and was threatened by multiple construction and mining project proposals. Then in the early 1970's concerned environmentalists, along with The Nature Conservancy, began purchasing the land for preservation and recreational use. Today the Dolly Sods Wilderness Area comprises 17,371 acres.

With over 47 miles of hiking trails following old railroad grades and logging roads there are many hiking circuit options. We have 3 circuit hikes posted here: Dolly Sods North, at 11.9 miles this hike highlights the high meadows and mountain views. The Forks of Red Creek, in the central section crossing Red Creek and several streams. And Dolly Sods/Lions Head, that combines the best parts of the first 2, as well as the view from the Lions Head on Breathed Mountain.

- ▶ **Mile 0.0** – From the parking area on FR75 pass the trailhead sign and start down the Bear Rocks Trail TR522. Note that none of the trails in the Dolly Sods area are blazed, however they are well marked with signage. The Bear Rocks Trail is washed out for the first 0.5 miles until it crosses a small stream. Pass over a ridge, and then descend another washed out section to the intersection of the Dobbin Grade Trail TR526 on the left.
- ▶ **Mile 1.0** – The Bear Rocks Trail becomes narrow passing through a boggy section and over a wooden walkway before arriving at the crossing for Red Creek. Cross Red Creek, then on the left is a nice campsite with slate chairs and fire ring. The trail continues on the left once crossing the creek and climbs steeply for 0.2 miles then makes a sharp turn right into a fern field. Walk over another wooden footpath entering a wooded area where the trail climbs towards the first meadow. Exit the woods and pass over the first open meadow. The Bear Rocks Trail will then descend through a hollow and climb over another rise then end at the intersection of the Raven Ridge Trail TR521.
- ▶ **Mile 2.3** – Continue straight uphill on the Raven Ridge Trail TR521, then in 0.2 miles reach the intersection of the Beaver View Trail TR523.
- ▶ **Mile 2.5** – Continue straight on the Raven Ridge Trail TR521 as the trail leaves the meadows, then makes a sharp left hand turn into a wooded area. Exit the wooded area and shortly arrive at the intersection of the Rocky Ridge Trail TR524.
- ▶ **Mile 3.8** – Turn left on the Rocky Ridge Trail TR524 then in 0.3 miles reach one of the best overlooks of the hike into Canaan Valley. The next 1.4 miles on the Rocky Ridge Trail TR524 passes the area where most of the windswept boulders are located. This section of the trail can be a little tricky to navigate. Just look for small rock cairns.
- ▶ **Mile 5.5** – Reach the intersection of the Dobbin Grade Trail TR526. Turn left downhill on the Dobbin Grade Trail TR526 as it descends the valley, then crosses the left fork of Red Creek in 1.0 miles. The trail will turn more to the right before arriving at the junction of the Beaver View Trail in 0.6 miles.
- ▶ **Mile 7.1** - Continue straight on the Dobbin Grade Trail passing a spring (hose attached) in 0.3 miles, then descend to the valley floor and pass through a boggy area before arriving at the intersection of the Upper Red Creek Trail TR509 0.6 miles from the spring.
- ▶ **Mile 8.0** - Pass the terminus of the Upper Red Creek Trail TR509, then in 0.1 miles arrive at the Raven Ridge Trail TR521.
- ▶ **Mile 8.1** – Turn left uphill on the Raven Ridge Trail TR521. **WARNING:** People look at the map and notice that following the Dobbin Grade Trail back to the Bear Rocks Trail is a shorter route. Don't do it! The Dobbin Grade Trail is a boggy mess anytime of the year, and offers little scenery. Taking the Raven Ridge Trail TR521 has much nicer views and is completely dry. So, after turning left uphill onto the Raven Ridge Trail TR521 pass through several nice meadows and wooded areas for 1.5 miles back to the intersection with the Bear Rocks Trail TR522 terminus you passed earlier in the hike.
- ▶ **Mile 9.6** – Turn right on the Bear Rocks Trail TR522 retracing your earlier steps through the meadows, crossing Red Creek, passing the Dobbin Grade Trail terminus, and climbing back to the parking area.
- ▶ **Mile 11.9** – Arrive back at the Bear Rocks Trailhead and parking area.